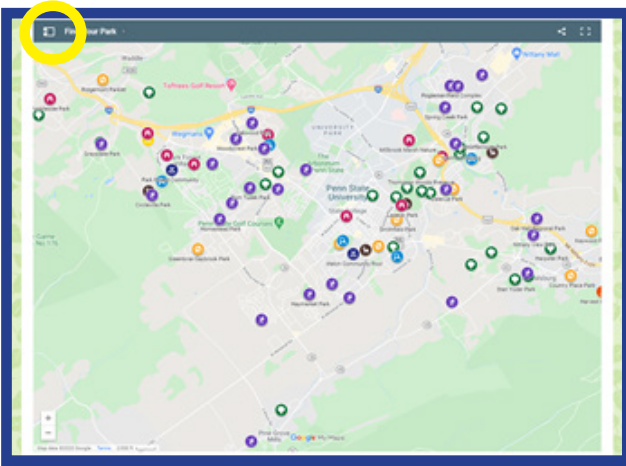
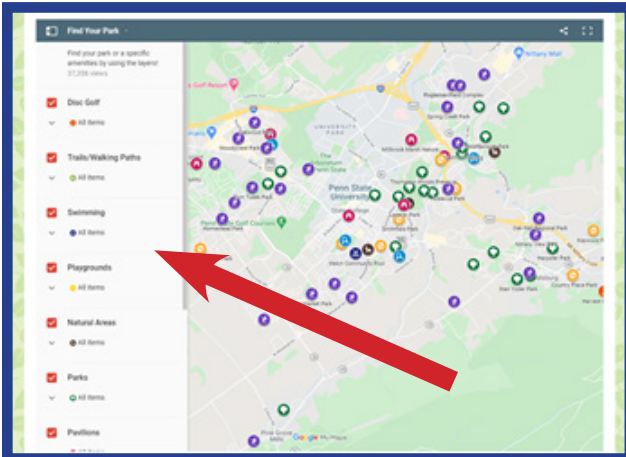


Tips & Tricks to using our Find Your Park Map!



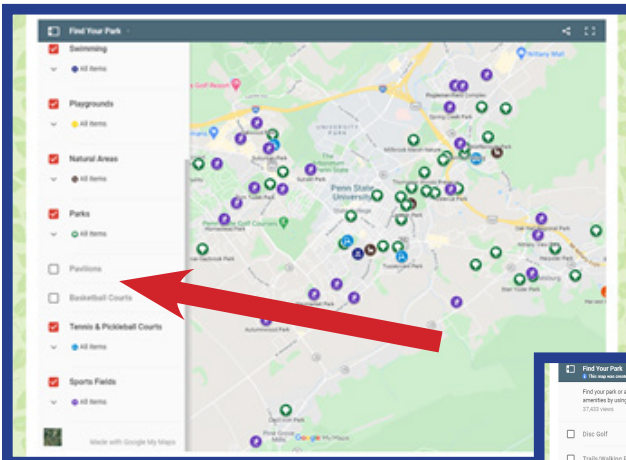
This is your starting point! Many parks have multiple icons representing amenities that each park contains.

Click the small icon inside the yellow circle!



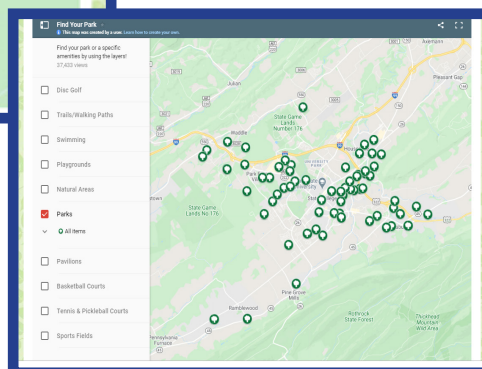
Once you click on the circle, a new menu opens, showing the various map layers like Disc Golf, Trails/Walking Paths, and more!

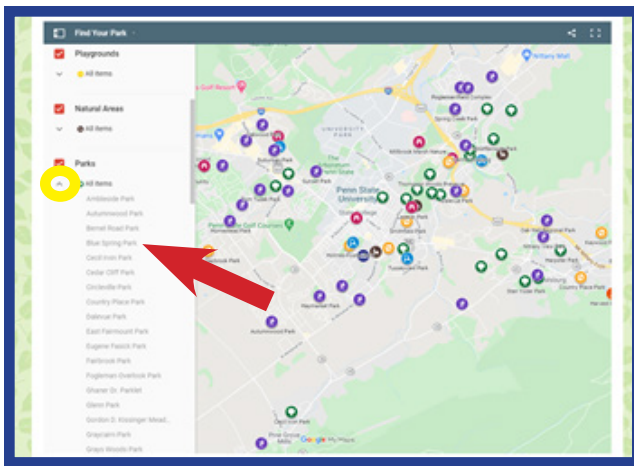
Each layer is represented by an icon (i.e., a tree for parks, a basketball for sport courts, etc.). If a park has more than one icon, they will be layered on top of each other and you will only see them as you adjust layers.



If you unclick a layer, you will see that certain icons are removed from the map. You can have all layers active or just one or two layers.

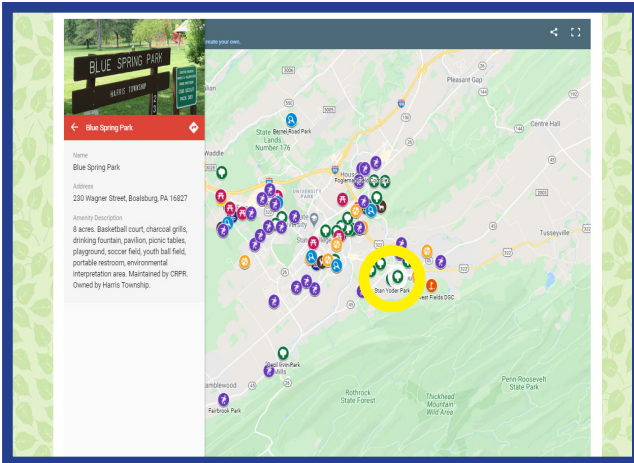
In the 2nd photo, you can see just the Parks layer (all green Trees) as all other layers were unchecked.



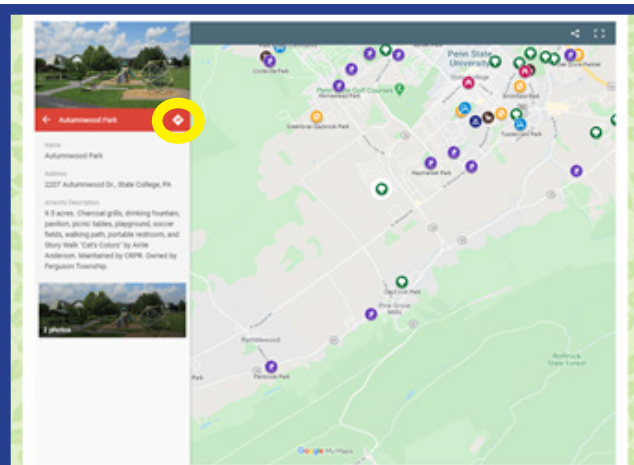


Not only can you click an icon on the map to find out more info. about a park, you can also click the small arrow under each layer's title, to find the parks that have those amenities. In this sample, this Parks layer includes all parks in the Centre Region.

You can also click on a Park's listing in this layer, and you'll see that park highlighted on the map by a white circle behind the icon. In this example, we clicked on Blue Spring Park.



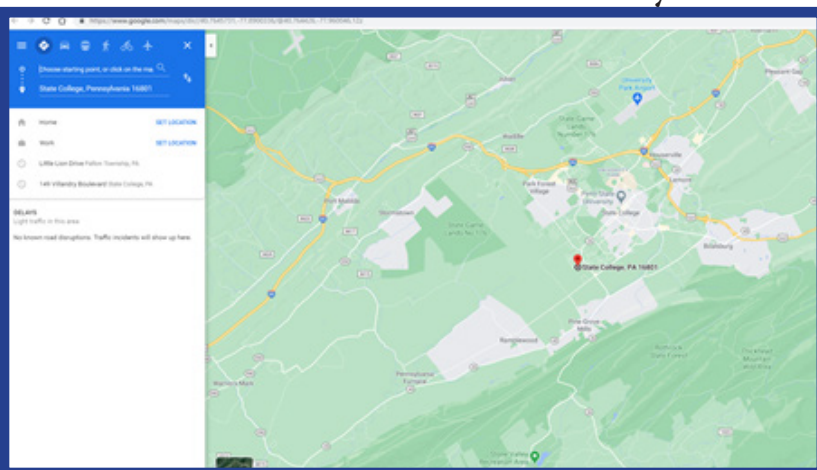
An information window opens up as well to show the park's name, a photo(s), a description of the park and its amenities, and a link to driving directions.

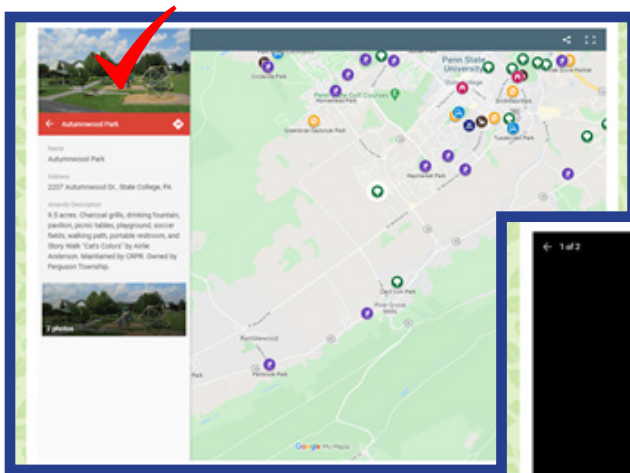


If you are interested in driving directions, you can click on the small arrow/diamond underneath the photo, and a new window will open in your browser.

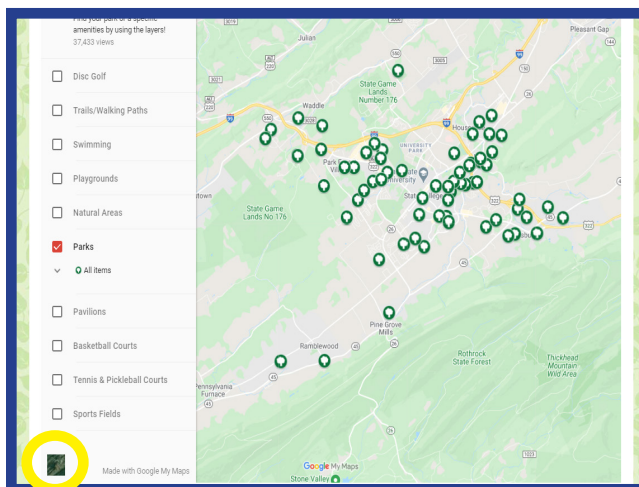
From this new window, you can add your starting location, like your home address for example, and turn-by-turn directions will be provided to you.

If you have a smart phone, you can do this from your smart phone and receive directions while driving. In this example, we clicked the arrow for directions to Autumnwood Park, and you can see in the second photo what that driving map looks like.



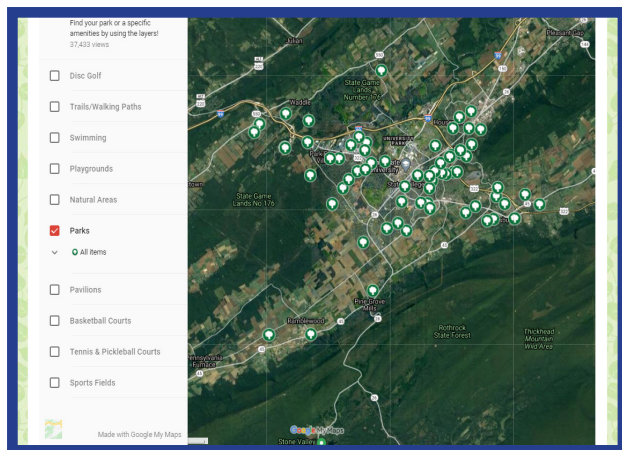


Going back to the original listing for Autumnwood Park, you can also double-click on the photos, and full-size photos will open in a pop-up window.



If you are someone who prefers using a satellite map vs. just a street map, you can click on the satellite image in the lower left corner, and the map will switch to a satellite image.

The second photo shows that change, and the third photo shows an aerial photo of one of the local parks (Circleville Park). By using the “increase view” button, the “plus” sign, you can move in until you can see an aerial view of each park. This option really helps you understand the overall layout of each park location.



To get to the “plus” sign, just re-hide your big menu, click the plus sign, and then you can re-open the menu again.

