



SURVEY SUMMARY – STATE COLLEGE, PA

Date: January 27th, 2022 Project File No.: US2021-017

Attention: State College, PA Project Name: State College Skatepark at High Point Park

The following is a summary of the feedback gathered from the online survey and the design workshop webinar on Thursday, January 27th. The workshop was held virtually using Zoom Webinar to gain input regarding potential skatepark terrain and comments on the sample designs provided. Please review and contact NLS with any questions or comments.

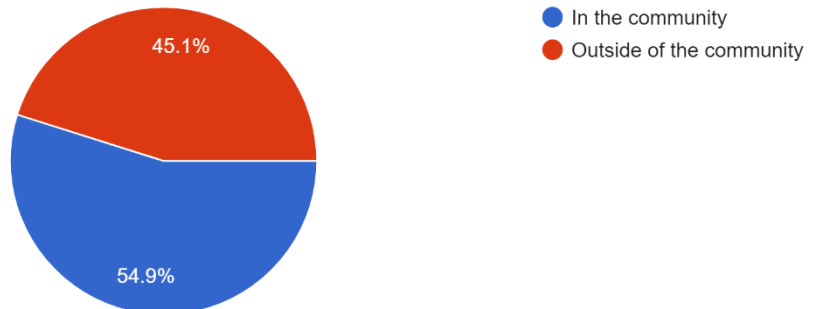
Part One: Demographics

Participation: A total of 175 community members completed the online survey.

Question 1: I Live...

- 54.9% In Community
- 45.1% Outside

More than half of the participants live in the community. This represents a strong interest in the skatepark design, and the survey reached a lot of groups.



Question 2: I am interested in the project because I am...

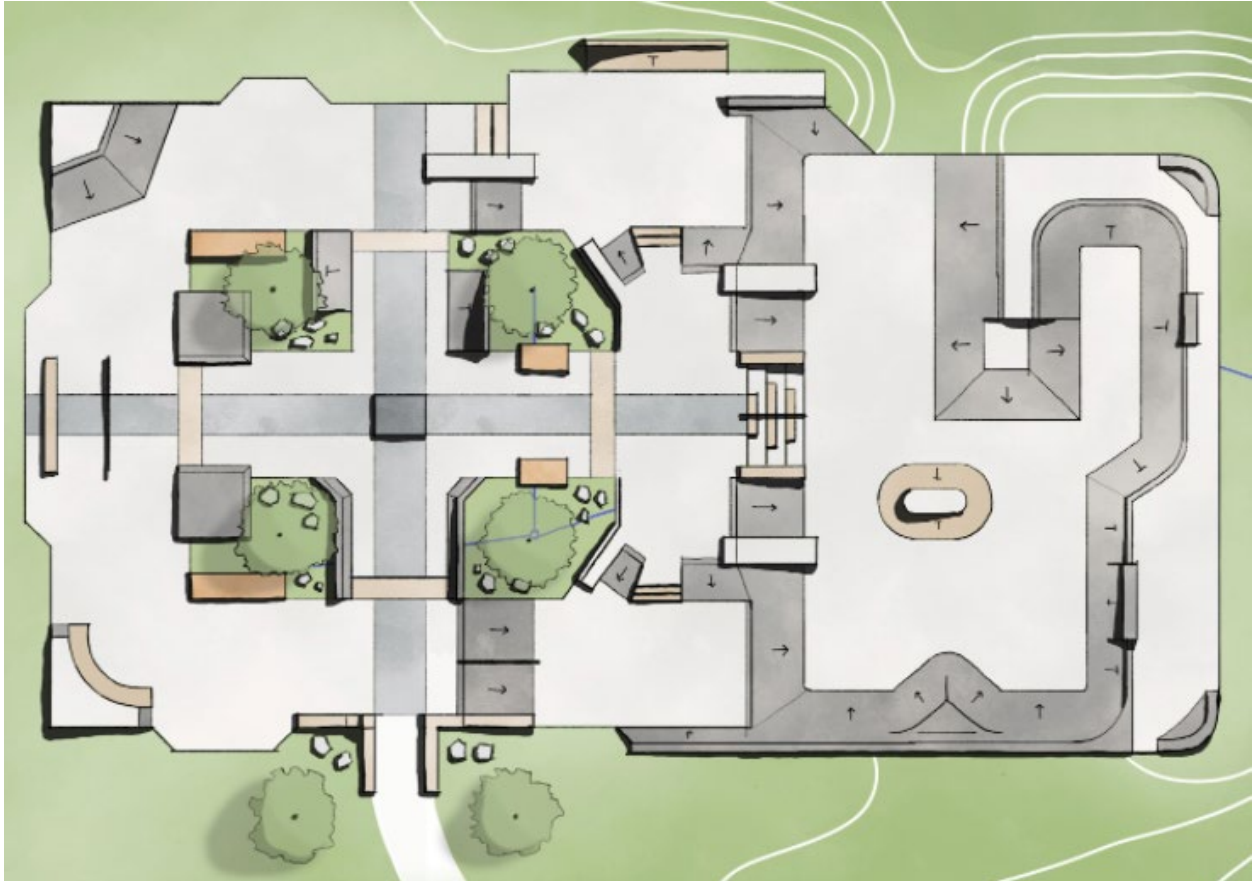
- | | |
|--------------|---|
| • 119 (68%) | A Skateboarder |
| • 14 (8%) | A BMX Rider |
| • 12 (6.9%) | A Scooter Rider |
| • 25 (14.3%) | A Parent/Guardian/Spectator |
| • 37 (21.1%) | A Local Resident Interested |
| • 8 (4.6%) | A Rollerblader / Roller Skater |
| • 21 (12.6%) | Other / non-participant excited to begin using park |

The clear majority of participants are Skateboarders and there is strong representation from parents/guardians of users, and local residents. The takeaway is that we will make sure the design is “all-wheel” for users, and there is a lot of active skateboarders in the community.



SURVEY SUMMARY – STATE COLLEGE, PA

Part Two: Current Concept Feedback:





SURVEY SUMMARY – STATE COLLEGE, PA

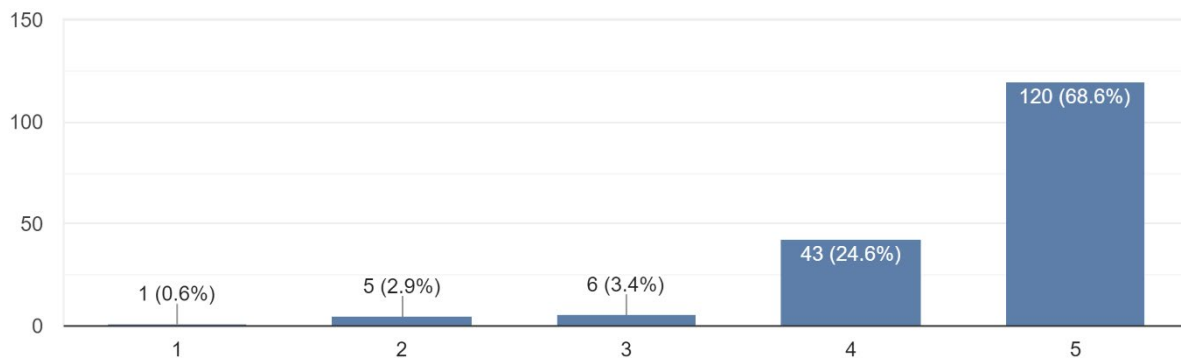
What do you like about the current concept?

- **Variety** of features.
- The floating mini-ramp & plaza section.
- Great flow around park.
- Size of features aren't too big.
- **Granite material & plaza style.**
- Attention to **local architecture.**
- **Green space** within design.
- Balance between spacious and obstacles.
- Lots of ledges.
- Transition area looks friendly and good for beginners.

What do you dislike about the current concept?

- Make sure features are sized correctly.
- Make sure spacing is adequate and not **too cramped.**
- Would like a “micro mini ramp” included.
- **More furnishing and seating around exterior, support areas for resting.**
- Wish there could be lights.
- The transition area could be a **closed off bowl** instead of open.

How much do you like the current design concept?



(Not so much)	1:	1	(0.6%)
	2:	5	(2.9%)
	3:	6	(3.4%)
	4:	43	(24.6%)
(Really like it)	5:	120	(68.6%)



SURVEY SUMMARY – STATE COLLEGE, PA

Explain why you feel this way:

- Large variety of features for progression.
- Area to flow around and do long lines.
- Contains street terrain that isn't available in the region.
- Focus on beginners and community make the park feel inviting.
- Aesthetics and overall “vibe” is a welcome addition to a skatepark.
- Transition area needs slight adjustment, but overall great design.
- Low risk of collisions.
- It will be exciting to have a skatepark in the community.

Survey Participants showed immense support for the current concept. The most common comment was to refine the transition area to help contain flow or give a bit more space to individuals who only want to skate transition.

Part Three: Additional Information

Beyond the concrete hardscape, is there anything else you would like to see included with this skatepark?

- **Seating areas for non-users.**
- **Cover key areas for weather and shade.**
- Natural planting and shade from trees.
- Creative sculptures in center.
- Lights.
- Trash and Recycling.

Please provide any thoughts you have on how to make this skatepark unique to your community. Ideas on incorporating local art & heritage, special color & materials, or anything else that could make this public space one-of-a-kind are welcome!

- Blue, white and maroon features with grey accents.
- A giant keystone.
- Sculptures by Nancy Schon.
- Space for events / performances.
- Red brick accents.
- Include some movable items.



SURVEY SUMMARY – STATE COLLEGE, PA

The main takeaways from the survey data and webinar discussion the current design direction are:

- There is major support for the current design and direction.
- Some feedback would like to see further modifications in the transition area to address capacity and flow.
- A covered area for shade and weather would be a great addition.
- The plaza style and quality materials is a welcomed addition to the area.
- Open spacing and low impact features with a focus on community is something that is well received.

The preceding report is a summary of public commentary as interpreted by New Line Skateparks. For further data, demographic information, comments, or clarification please contact NLS.