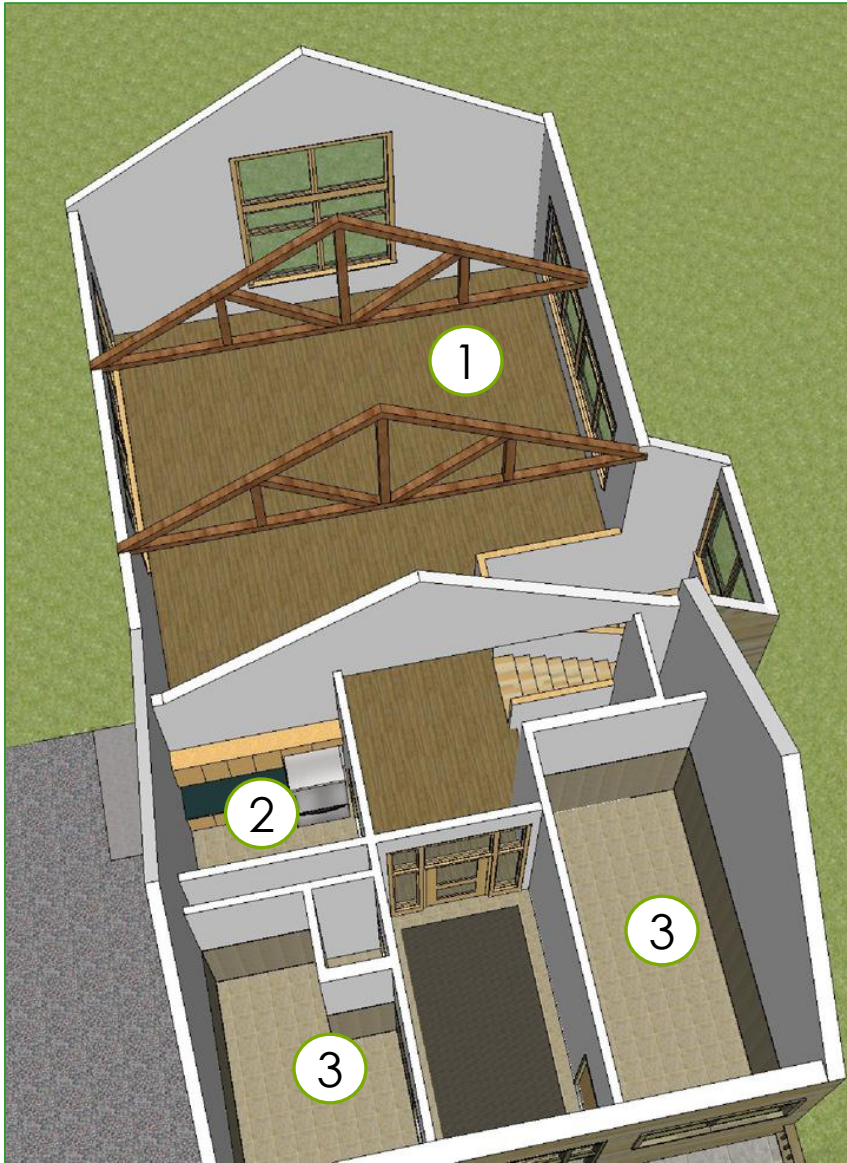


SUSTAINABLE HIGHLIGHTS



UPPER LEVEL

1 CLASSROOM

- Large windows admit natural light
- High efficiency lights used
- Lights are on occupancy sensors
- Carpet has recycled content

2 BREAK ROOM

- Cabinets are made of wheat board

3 RESTROOMS

- Hand dryers eliminate the need for paper towels
- Plumbing fixtures are low water use
- Partitions are made of 100% recycled material
- Floor and wall tile are made of 40% recycled material

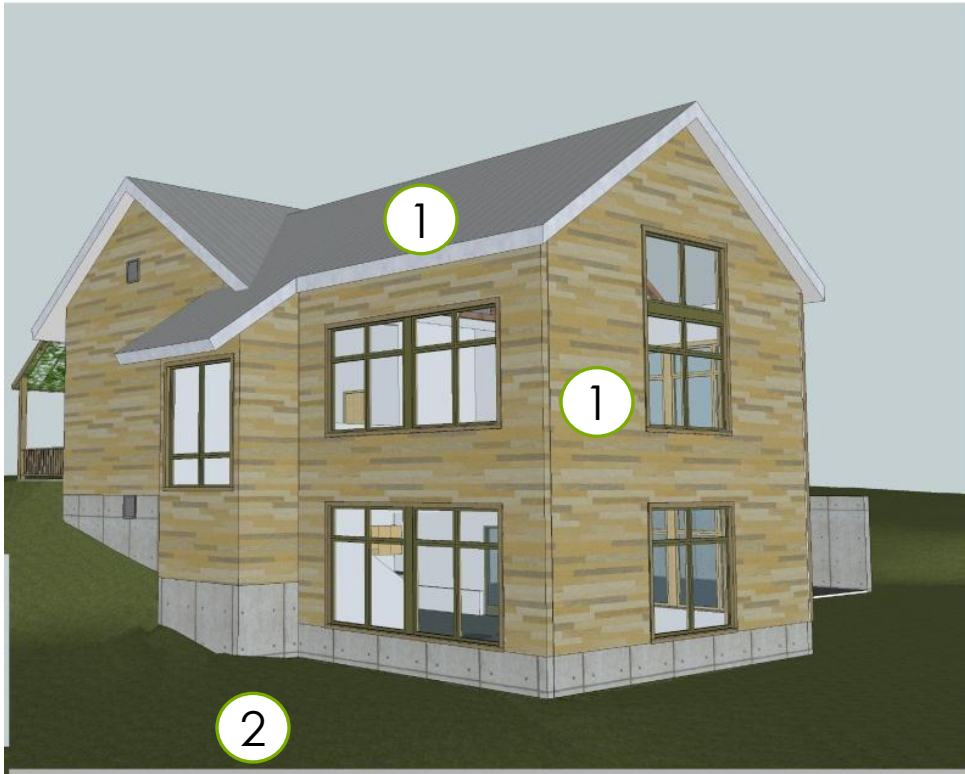
SUSTAINABLE HIGHLIGHTS



LOWER LEVEL

- 1 CLASSROOM**
 - Large windows admit natural light
 - High efficiency lights used
 - Lights are on occupancy sensors
 - Flooring is made of recycled rubber gathered from sources such as car tires
- 2 HEATING AND COOLING**
 - The building is heated and cooled using a highly efficient geothermal heating system

SUSTAINABLE HIGHLIGHTS



VIEW FROM NORTHEAST

OUTSIDE THE BUILDING

- 1 MATERIALS**
 - Exterior walls and roof are well insulated
 - Light color roof was chosen to reflect the heat from the sun
 - Materials were selected to minimize the contaminants in the building
 - Where feasible, locally made products were used

- 2 HEATING AND COOLING**
 - The buildings geothermal heating system includes five pipes extending 200' into the ground beside the building

