

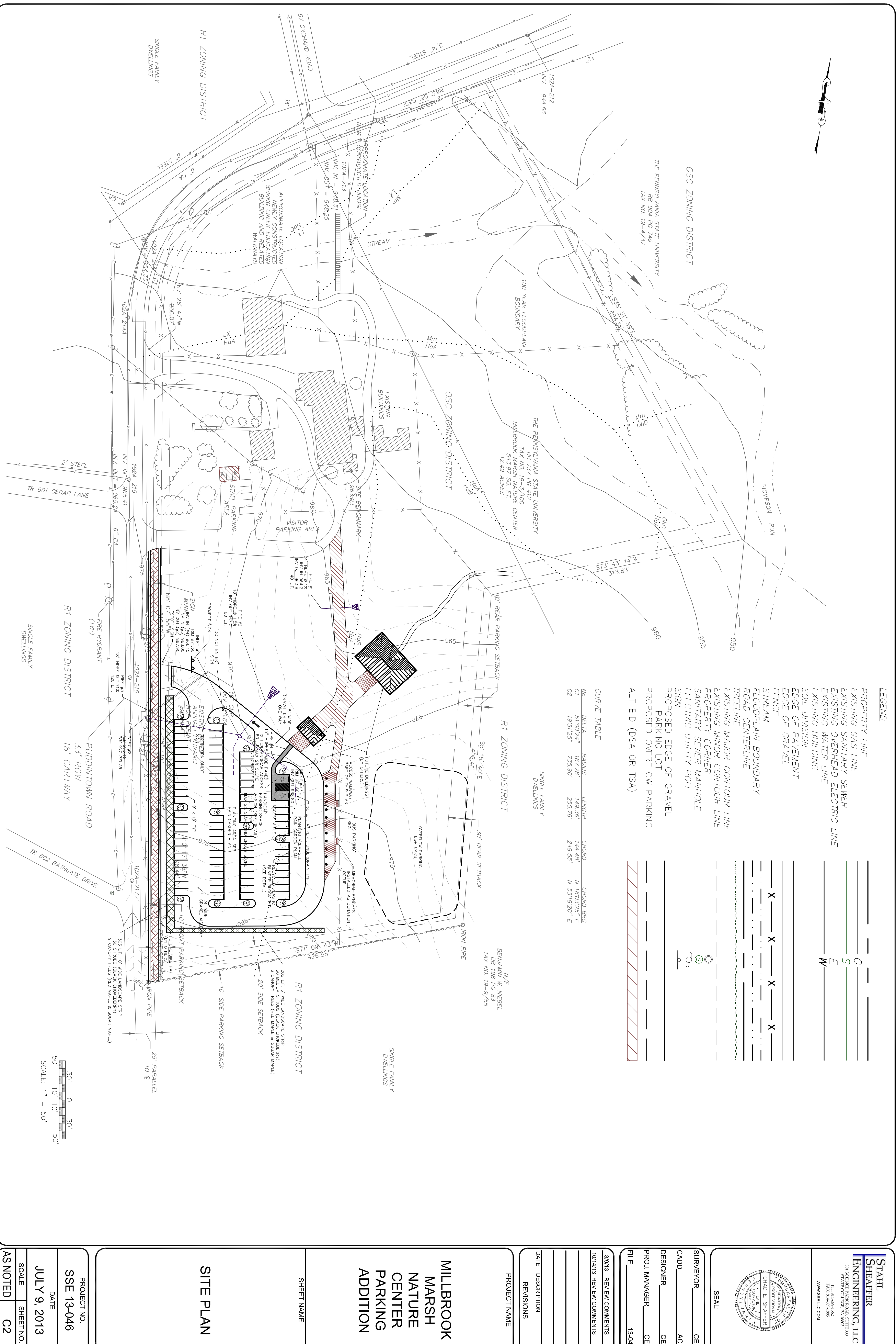


**LEGEND**

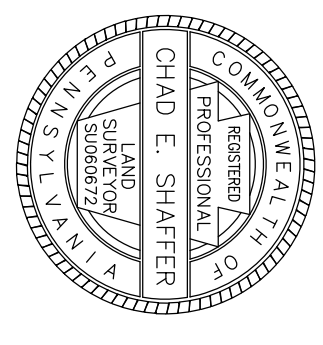
PROPERTY LINE	---
EXISTING GAS LINE	G
EXISTING SANITARY SEWER	S
EXISTING OVERHEAD ELECTRIC LINE	E
EXISTING WATER LINE	W
EXISTING BUILDING	---
SOIL DIVISION	---
EDGE OF PAVEMENT	---
EDGE OF GRAVEL	---
FENCE	X - X - X - X - X
STREAM	~~~~~
FLOODPLAIN BOUNDARY	---
ROAD CENTERLINE	---
TREELINE	---
EXISTING MAJOR CONTOUR LINE	---
EXISTING MINOR CONTOUR LINE	---
PROPERTY CORNER	○
SANITARY SEWER MANHOLE	⊙
ELECTRIC UTILITY POLE	⊙
SIGN	⊙
PROPOSED EDGE OF GRAVEL	---
PARKING LOT	---
PROPOSED OVERFLOW PARKING	---
ALT BID (DSA OR TSA)	---

**CURVE TABLE**

No.	DELTA	RADIUS	LENGTH	CHORD	CHORD BRG
C1	97.00/24°	167.78	149.36	144.48	N 19°03'25" E
C2	19.31/25°	735.90	230.76	249.55	N 53°19'20" E



**STAHL SHEAFFER ENGINEERING, LLC**  
 301 S. HENCKEL PARK ROAD, SUITE 333  
 STATE COLLEGE, PA 16802  
 P.O. BOX 1826  
 STATE COLLEGE, PA 16802  
 WWW.SSEI.LLC.COM



SEAL: \_\_\_\_\_

SURVEYOR: CES  
 CADD: ACQ  
 DESIGNER: CES  
 PROJ. MANAGER: CES  
 FILE: 13-046

8/9/13 REVIEW COMMENTS  
 10/14/13 REVIEW COMMENTS  
 DATE DESCRIPTION REVISIONS

PROJECT NAME  
**MILLBROOK MARSH NATURE CENTER PARKING ADDITION**

SHEET NAME  
**SITE PLAN**

PROJECT NO.  
**SSE 13-046**  
 DATE  
**JULY 9, 2013**  
 SCALE SHEET NO.  
**AS NOTED C2**